



## Acme Sanitary Ware Co Ltd

Acme Building, 22-28 Nanking Street, Kowloon, Hong Kong  
 Tel: 2388 7171 Fax: 2710 8012  
 E-mail: acme@acmesanitary.com.hk  
 Website: www.acmesanitaryware.com.hk

|          |  |      |  |     |           |     |
|----------|--|------|--|-----|-----------|-----|
| PROJECT  |  | REF  |  | REV | ITEM CODE |     |
| LOCATION |  | DATE |  |     | PAGE      | 1/3 |

# SANITARY WARE SPECIFICATION SHEET

|                                                                                                                                                                                                                                                                                                                                                                                                                                                                                                                                                                                                                                                                                                                                                                                                                                                                                                                                                                                                                                                                                                                                                                                                                                                                         |                                                              |                                                                                                                                                                        |              |             |                             |                |                   |                     |                    |                |                  |       |                   |                  |                      |             |                        |       |
|-------------------------------------------------------------------------------------------------------------------------------------------------------------------------------------------------------------------------------------------------------------------------------------------------------------------------------------------------------------------------------------------------------------------------------------------------------------------------------------------------------------------------------------------------------------------------------------------------------------------------------------------------------------------------------------------------------------------------------------------------------------------------------------------------------------------------------------------------------------------------------------------------------------------------------------------------------------------------------------------------------------------------------------------------------------------------------------------------------------------------------------------------------------------------------------------------------------------------------------------------------------------------|--------------------------------------------------------------|------------------------------------------------------------------------------------------------------------------------------------------------------------------------|--------------|-------------|-----------------------------|----------------|-------------------|---------------------|--------------------|----------------|------------------|-------|-------------------|------------------|----------------------|-------------|------------------------|-------|
| Item Descriptions                                                                                                                                                                                                                                                                                                                                                                                                                                                                                                                                                                                                                                                                                                                                                                                                                                                                                                                                                                                                                                                                                                                                                                                                                                                       | BioZone 'PR' genuine air purifier for homes and offices      | Illustration/ Drawing                                                                                                                                                  |              |             |                             |                |                   |                     |                    |                |                  |       |                   |                  |                      |             |                        |       |
| Dimensions                                                                                                                                                                                                                                                                                                                                                                                                                                                                                                                                                                                                                                                                                                                                                                                                                                                                                                                                                                                                                                                                                                                                                                                                                                                              | L401 x W131 x H91 mm                                         |   |              |             |                             |                |                   |                     |                    |                |                  |       |                   |                  |                      |             |                        |       |
| Model                                                                                                                                                                                                                                                                                                                                                                                                                                                                                                                                                                                                                                                                                                                                                                                                                                                                                                                                                                                                                                                                                                                                                                                                                                                                   | PR 10 / PR 20 / PR 30                                        |                                                                                                                                                                        |              |             |                             |                |                   |                     |                    |                |                  |       |                   |                  |                      |             |                        |       |
| Color                                                                                                                                                                                                                                                                                                                                                                                                                                                                                                                                                                                                                                                                                                                                                                                                                                                                                                                                                                                                                                                                                                                                                                                                                                                                   | White                                                        |                                                                                                                                                                        |              |             |                             |                |                   |                     |                    |                |                  |       |                   |                  |                      |             |                        |       |
| Manufacturer                                                                                                                                                                                                                                                                                                                                                                                                                                                                                                                                                                                                                                                                                                                                                                                                                                                                                                                                                                                                                                                                                                                                                                                                                                                            | BioZone Scientific International                             |                                                                                                                                                                        |              |             |                             |                |                   |                     |                    |                |                  |       |                   |                  |                      |             |                        |       |
| Supplier                                                                                                                                                                                                                                                                                                                                                                                                                                                                                                                                                                                                                                                                                                                                                                                                                                                                                                                                                                                                                                                                                                                                                                                                                                                                | Acme Sanitary Ware Co. Ltd<br>Mr. Eric Wong/ Mr. Wilson Hung |                                                                                     |              |             |                             |                |                   |                     |                    |                |                  |       |                   |                  |                      |             |                        |       |
| Contact Tel/Fax                                                                                                                                                                                                                                                                                                                                                                                                                                                                                                                                                                                                                                                                                                                                                                                                                                                                                                                                                                                                                                                                                                                                                                                                                                                         | (852) 2388-7171 / (852) 2710-8012                            |                                                                                                                                                                        |              |             |                             |                |                   |                     |                    |                |                  |       |                   |                  |                      |             |                        |       |
| E-mail                                                                                                                                                                                                                                                                                                                                                                                                                                                                                                                                                                                                                                                                                                                                                                                                                                                                                                                                                                                                                                                                                                                                                                                                                                                                  | acme@acmesanitary.com.hk                                     |                                                                                                                                                                        |              |             |                             |                |                   |                     |                    |                |                  |       |                   |                  |                      |             |                        |       |
| Website                                                                                                                                                                                                                                                                                                                                                                                                                                                                                                                                                                                                                                                                                                                                                                                                                                                                                                                                                                                                                                                                                                                                                                                                                                                                 | www.acmesanitary.com.hk                                      |                                                                                                                                                                        |              |             |                             |                |                   |                     |                    |                |                  |       |                   |                  |                      |             |                        |       |
| <b>Function of air purifier (陽光通系列空氣淨化器功能)</b><br>Purifies with quintuple actions 五種淨化功能<br>Destroys odor, bacteria, viruses, mold, fumes and other airborne impurities<br>消除臭味、細菌、病毒、霉菌、煙汽及其它飄浮雜質<br>No need use consumable chemicals, filters or scents 不用有消耗性的化學、隔濾網或香料<br><b>Advantages of air purifier (陽光通系列空氣淨化器優點)</b><br>Improve indoor air quality 改善室內空氣的質量<br>Healthier home and working environments 更加健康的家居及工作環境<br>Easy to maintain and flexible use 容易保養及很多地方都適用<br>Effective and advanced 有效及先進<br><b>BioZone Technologies (技術內容)</b><br><b>Photo Catalytic Oxidation</b> process destroys VOC's catalytically on special surface material<br>紫外線光觸媒用科學催化作用消滅吹過特殊物料上的揮發性有機化合物(VOC)<br><b>Photoplasma</b> eliminates the reproductive capability of micro-organisms and reduces their number<br>光離子簇破壞微生物的再生能力，大大減少它們的數量<br><b>Deep UV Light</b> inside the machine sterilizes micro-organisms that pass through<br>深頻紫外線清理經過設備內的微生物<br><b>Negative Ions</b> decrease the total concentration of harmful chemicals and dilute the presence of positive ions in the air to produce a freshness feeling<br>負離子減輕有害化學物質的濃度，也沖淡正離子的數目來產生一種清新的感覺<br><b>Ozone</b> obliterates bacteria, viruses, fungi, and remove odor from the air<br>臭氧消滅細菌、病毒、真菌、消除空氣中的臭味 |                                                              |                                                                                                                                                                        |              |             |                             |                |                   |                     |                    |                |                  |       |                   |                  |                      |             |                        |       |
|                                                                                                                                                                                                                                                                                                                                                                                                                                                                                                                                                                                                                                                                                                                                                                                                                                                                                                                                                                                                                                                                                                                                                                                     |                                                              |                                                                                                                                                                        |              |             |                             |                |                   |                     |                    |                |                  |       |                   |                  |                      |             |                        |       |
| <table><tr><td>Model No. 型號</td><td>PR 10/20/30</td></tr><tr><td>Area Coverage 覆蓋面積 (Sq.Ft.)</td><td>≤ 500/750/1000</td></tr><tr><td>Dimension 體積 (mm)</td><td>270(L)x230(W)x95(H)</td></tr><tr><td>Net Weight 重量 (gm)</td><td>1555/1570/1590</td></tr><tr><td>Power Input 電源輸入</td><td>12VDC</td></tr><tr><td>Power Adaptor 變壓器</td><td>100-240V~50-60Hz</td></tr><tr><td>Limited Warranty 保養期</td><td>One Year 一年</td></tr><tr><td>Remote Controller 遙控功能</td><td>Yes 有</td></tr></table>                                                                                                                                                                                                                                                                                                                                                                                                                                                                                                                                                                                                                                                                                                                                                                             |                                                              |                                                                                                                                                                        | Model No. 型號 | PR 10/20/30 | Area Coverage 覆蓋面積 (Sq.Ft.) | ≤ 500/750/1000 | Dimension 體積 (mm) | 270(L)x230(W)x95(H) | Net Weight 重量 (gm) | 1555/1570/1590 | Power Input 電源輸入 | 12VDC | Power Adaptor 變壓器 | 100-240V~50-60Hz | Limited Warranty 保養期 | One Year 一年 | Remote Controller 遙控功能 | Yes 有 |
| Model No. 型號                                                                                                                                                                                                                                                                                                                                                                                                                                                                                                                                                                                                                                                                                                                                                                                                                                                                                                                                                                                                                                                                                                                                                                                                                                                            | PR 10/20/30                                                  |                                                                                                                                                                        |              |             |                             |                |                   |                     |                    |                |                  |       |                   |                  |                      |             |                        |       |
| Area Coverage 覆蓋面積 (Sq.Ft.)                                                                                                                                                                                                                                                                                                                                                                                                                                                                                                                                                                                                                                                                                                                                                                                                                                                                                                                                                                                                                                                                                                                                                                                                                                             | ≤ 500/750/1000                                               |                                                                                                                                                                        |              |             |                             |                |                   |                     |                    |                |                  |       |                   |                  |                      |             |                        |       |
| Dimension 體積 (mm)                                                                                                                                                                                                                                                                                                                                                                                                                                                                                                                                                                                                                                                                                                                                                                                                                                                                                                                                                                                                                                                                                                                                                                                                                                                       | 270(L)x230(W)x95(H)                                          |                                                                                                                                                                        |              |             |                             |                |                   |                     |                    |                |                  |       |                   |                  |                      |             |                        |       |
| Net Weight 重量 (gm)                                                                                                                                                                                                                                                                                                                                                                                                                                                                                                                                                                                                                                                                                                                                                                                                                                                                                                                                                                                                                                                                                                                                                                                                                                                      | 1555/1570/1590                                               |                                                                                                                                                                        |              |             |                             |                |                   |                     |                    |                |                  |       |                   |                  |                      |             |                        |       |
| Power Input 電源輸入                                                                                                                                                                                                                                                                                                                                                                                                                                                                                                                                                                                                                                                                                                                                                                                                                                                                                                                                                                                                                                                                                                                                                                                                                                                        | 12VDC                                                        |                                                                                                                                                                        |              |             |                             |                |                   |                     |                    |                |                  |       |                   |                  |                      |             |                        |       |
| Power Adaptor 變壓器                                                                                                                                                                                                                                                                                                                                                                                                                                                                                                                                                                                                                                                                                                                                                                                                                                                                                                                                                                                                                                                                                                                                                                                                                                                       | 100-240V~50-60Hz                                             |                                                                                                                                                                        |              |             |                             |                |                   |                     |                    |                |                  |       |                   |                  |                      |             |                        |       |
| Limited Warranty 保養期                                                                                                                                                                                                                                                                                                                                                                                                                                                                                                                                                                                                                                                                                                                                                                                                                                                                                                                                                                                                                                                                                                                                                                                                                                                    | One Year 一年                                                  |                                                                                                                                                                        |              |             |                             |                |                   |                     |                    |                |                  |       |                   |                  |                      |             |                        |       |
| Remote Controller 遙控功能                                                                                                                                                                                                                                                                                                                                                                                                                                                                                                                                                                                                                                                                                                                                                                                                                                                                                                                                                                                                                                                                                                                                                                                                                                                  | Yes 有                                                        |                                                                                                                                                                        |              |             |                             |                |                   |                     |                    |                |                  |       |                   |                  |                      |             |                        |       |

Note:

\* All information of the above is for reference only. No prior notice is made if any changes.



## Acme Sanitary Ware Co Ltd

Acme Building, 22-28 Nanking Street, Kowloon, Hong Kong  
 Tel: 2388 7171 Fax: 2710 8012  
 E-mail: acme@acmesanitary.com.hk  
 Website: www.acmesanitaryware.com.hk

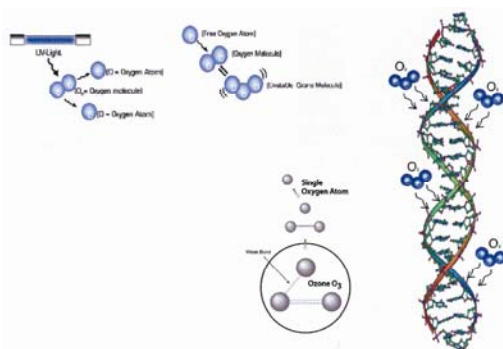
|          |  |      |  |     |           |     |
|----------|--|------|--|-----|-----------|-----|
| PROJECT  |  | REF  |  | REV | ITEM CODE |     |
| LOCATION |  | DATE |  |     | PAGE      | 2/3 |

# SANITARY WARE SPECIFICATION SHEET

## Advanced Technologies

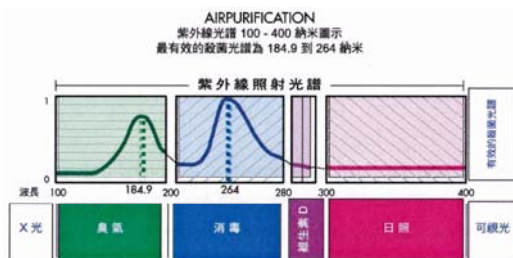
### (1) Ozone 活性氧 O<sub>3</sub>

Ozone is a strong oxidizing agent that effectively kills germs, virus and moulds as living organisms. It also remove chemical gases, VOC's and odors from air stream



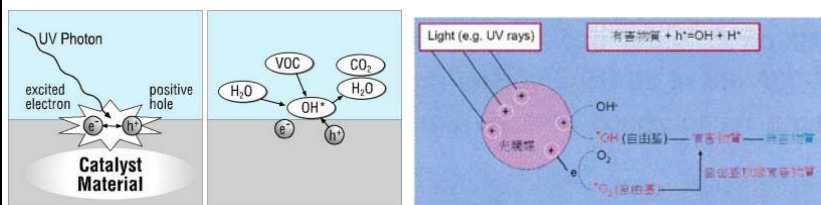
### (2) Deep UV 深頻紫外線

Kill all virus and bacteria



### (3) PhotoCatalytic Oxidation 光觸媒

Photo Catalytic Oxidation (PCO) process destroys VOC's catalytically on special surface material  
 Functions: Kill germs & smell

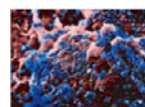


## Testing Result

### CNRS H5N1 Testing: 法國國家科學研究中心H5N1測試:

Ref. DE082\_2007 By CNRS  
 測試報告編號 DE082\_2007

Reduction of virus up to 99.9998% in less than 0.44 seconds.  
 0.44秒內，病毒減低率達 99.9998%。



### Dublin Test\* 都柏林測試\*:

70% bacteria reduction in a real environment  
 在實際環境下減少 70% 細菌

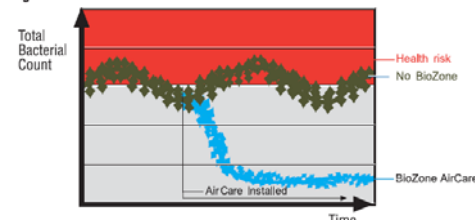


\* Ref no: V0273  
 School of Biomolecular  
 and Biomedical Science,  
 University College Dublin,  
 Belfield, Dublin 4, Ireland.  
 \*都柏林大學測試  
 報告

Agar plates incubated at 37°C for 48 hours for air samples taken in a sealed room (Series 1): sample taken (a) before BioZone treatment; (b) after BioZone treatment.

在密封的房間、室溫在攝氏 37 度、用培養皿培養細菌 48 小時的測試結果：  
 樣本 (a) 採用 BioZone 淨化器前；  
 (b) 採用 BioZone 淨化器後。

Figure 1.



Note:

\* All information of the above is for reference only. No prior notice is made if any changes.



## Acme Sanitary Ware Co Ltd

Acme Building, 22-28 Nanking Street, Kowloon, Hong Kong

Tel: 2388 7171 Fax: 2710 8012

E-mail: acme@acmesanitary.com.hk

Website: www.acmesanitaryware.com.hk

|          |  |      |  |     |           |     |
|----------|--|------|--|-----|-----------|-----|
| PROJECT  |  | REF  |  | REV | ITEM CODE |     |
| LOCATION |  | DATE |  |     | PAGE      | 3/3 |

## SANITARY WARE SPECIFICATION SHEET

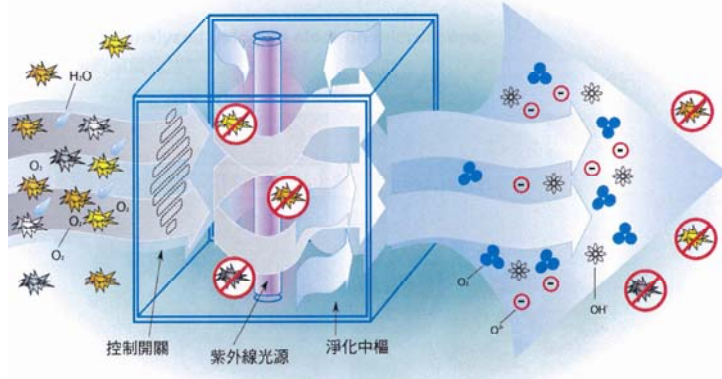
### Advanced Technologies

(4a) BioZone  
Scientific's  
PureWave  
陽光科技獨有之  
PureWave 過程

Process removes contaminants from air and surfaces by combining two very powerful purifying technologies- PhotoPlasma and PhotoChemistry. The synergy of their interaction produces a unique and a superlative way of cleaning air and surfaces of contaminants

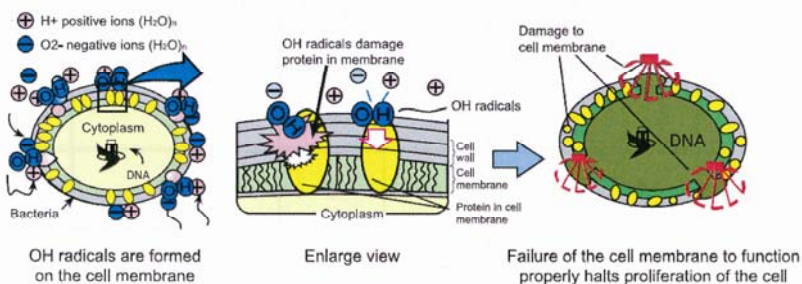
### 技術原理

I 光化學 II 光催化氧化 III 光電離子

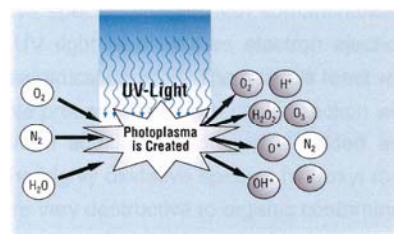
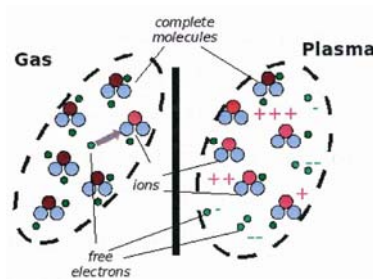


(4b) Reduction of  
biological  
contaminants  
by Photo Plasma  
光等離子的抑菌原理

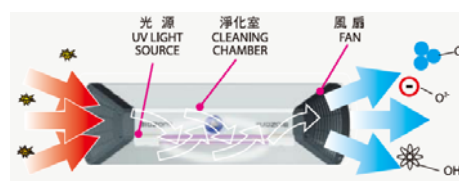
The highly oxidative species hydroxyl radicals are very destructive to organic contaminants because they steal hydrogen atoms from the organic materials, leaving decaying carbon ions. This entire process turns into a chain reaction the breakdown and formation of new hydroxyl radicals results in the continual decay of organic material



(4c) BioZone Irradiation Plasma  
光等離子簇



Plasma destruct microorganism's reproductive property



(5) Negative Ion 負離子

Reduce toxic chemical concentration & neutralize positive charged ion to produce a freshness feeling

Note: